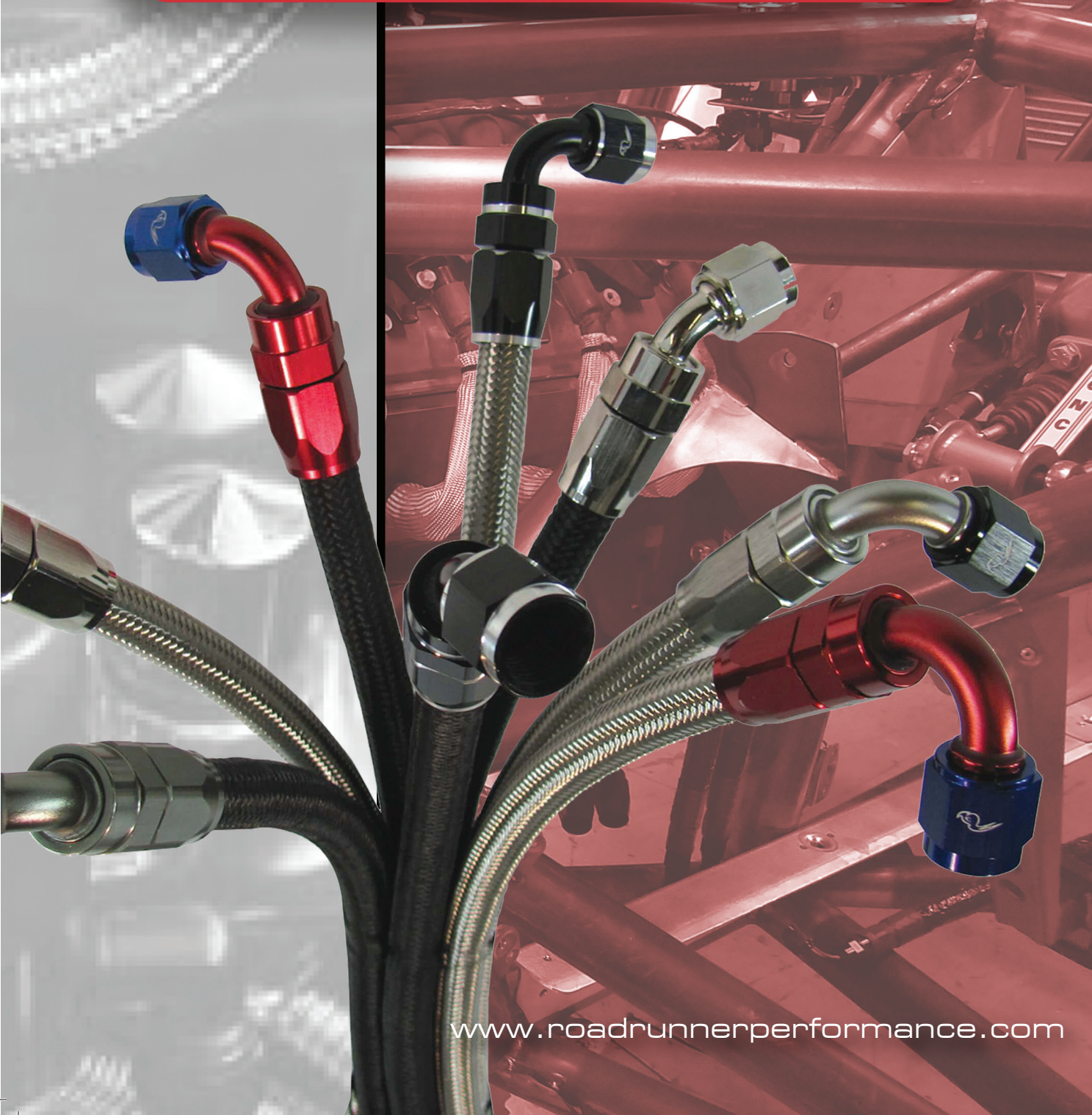




ROADRUNNER
PERFORMANCE
High Performance Hose & Fittings



www.roadrunnerperformance.com

HOSE AND FITTINGS CATALOG - 2024



TABLE OF CONTENTS

| | |
|---|------------|
| Stainless Steel, Liteweight, Push-On & PTFE Hose..... | 1 |
| Full Flow Swivel Anodized Hose Fittings..... | 2 |
| Anodized Push-On Hose Fittings..... | 3 |
| Crimp on Hose Ends for SS & LW Hose..... | 4 |
| Crimp on Hose Ends for an PTFE Hose..... | 5 |
| Quick Disconnect Fuel Line Settings..... | 5 |
| Quick Connect Adapters..... | 6 |
| Anodized PTFE Hose Fittings..... | 7 |
| Male Pipe & Male AN Thread Hose Ends | 8 |
| Flare to Pipe Adapters | 8-9 |
| Flare to Flare Adapters | 10-11 |
| Bulkhead Adapters..... | 12 |
| Flare to Metric Adapters..... | 13 |
| Flare to O-Ring Adapters..... | 13 |
| Caps & Plugs..... | 14 |
| Specialty Adapters | 15-16 |
| Carburetor Adapters..... | 17 |
| Male Pipe to Barb Adapters | 18 |
| Aluminum Hard Line and Adapters..... | 18 |
| Fuel Accessories..... | 19-20 |
| Tools..... | 20 |
| Signs & Clamshell Packaging | 21 |
| Terms & Conditions | Back Cover |

Order Entry Email: sales@roadrunnerperformance.com • Order Entry Fax: 509.262.9500

Mailing Address: P.O. Box 1679, Simi Valley, CA 93062

Phone: 509.262.9165 • Email: sales@roadrunnerperformance.com

WWW.ROADRUNNERPERFORMANCE.COM

HOSE (ALL HOSE ORDERED IN 100' LENGTHS RECEIVES 5% DISCOUNT)

To order 100-foot lengths, contact sales@roadrunnerperformance.com or call 509.262.9165.



| PART NO | AN | (IN) | I.D. (MM) | (IN) | O.D. (MM) | OPERATING PRESS | BURST PRESS |
|---------------|-----|--------|-----------|----------|-----------|-----------------|-------------|
| SS04 / SS04BK | -4 | 7/32 | 5.4 | 7/16 | 11.2 | 1000 PSI | 6000 PSI |
| SS06 / SS06BK | -6 | 11/32 | 8.7 | 9/16 | 14.2 | 1000 PSI | 6000 PSI |
| SS08 / SS08BK | -8 | 7/16 | 11.1 | 11/16 | 17.1 | 1000 PSI | 5000 PSI |
| SS10 | -10 | 9/16 | 14.2 | 53/64 | 20.8 | 1000 PSI | 5000 PSI |
| SS12 | -12 | 11/16 | 17.4 | 31/32 | 24.4 | 1000 PSI | 3750 PSI |
| SS16 | -16 | 7/8 | 22.2 | 13/64 | 30.5 | 750 PSI | 2500 PSI |
| SS20 | -20 | 1-1/8" | 28.5 | 1-13/32" | 35.81 | 500 PSI | 2000 PSI |

STAINLESS STEEL BRAIDED HOSE
Temperature range: -40° C to +150° C

- Available in Stainless Steel outer cover OR Black outer cover. (Add BK for Black to hose part number.)
- Constructed with a reinforced Chlorinated Polyethylene (CPE) synthetic rubber liner with a nylon inner braid.
- Stainless steel outer braid resists abrasion and corrosion.
- For use with fuel systems (like E85), methanol, oils, lubricants, coolant systems and vacuum applications.
- SS Hose is sold in 25 & 50 ft lengths. SS16 & SS20 are cut to Custom Lengths.



| PART NO | AN | (IN) | I.D. (MM) | (IN) | O.D. (MM) | OPERATING PRESS | BURST PRESS |
|---------------|-----|--------|-----------|----------|-----------|-----------------|-------------|
| LW04 / LW04BK | -4 | 7/32 | 5.4 | 7/16 | 11.2 | 500 PSI | 2000 PSI |
| LW06 / LW06BK | -6 | 11/32 | 8.7 | 9/16 | 14.2 | 500 PSI | 2000 PSI |
| LW08 / LW08BK | -8 | 7/16 | 11.1 | 11/16 | 17.1 | 500 PSI | 2000 PSI |
| LW10 / LW10BK | -10 | 9/16 | 14.2 | 53/64 | 20.8 | 500 PSI | 2000 PSI |
| LW12 / LW12BK | -12 | 11/16 | 17.4 | 31/32 | 24.4 | 350 PSI | 1400 PSI |
| LW16 / LW16BK | -16 | 7/8 | 22.2 | 13/64 | 30.5 | 350 PSI | 1400 PSI |
| LW20 / LW20BK | -20 | 1-1/8" | 28.5 | 1-13/32" | 35.81 | 350 PSI | 1400 PSI |

NYLON BRAIDED LITEWEIGHT HOSE
Temperature range: -40° C to +150° C

- Available in Black with Blue Threading or solid Black. (Add BK for Black to end of hose part number.)
- Constructed with a braided nylon outer shield for abrasion resistance and a flexible stainless steel inner core for superior strength embedded in the Chlorinated Polyethylene (CPE) synthetic rubber liner.
- For use with all fuels and fuel systems, including E85, E10, methanol, oils, lubricants and coolant systems.
- LW Hose is sold in 25 & 50 ft lengths. LW16, LW16BK & LW20, LW20BK are cut to custom lengths.



| PART NO | AN | (IN) | I.D. (MM) | (IN) | O.D. (MM) | MAXIMUM OPERATING PRESSURE |
|---------------|-----|------|-----------|------|-----------|----------------------------|
| PLO4 / PLO4BK | -4 | .25 | 6.35 | .47 | 11.94 | 250 PSI |
| PLO6 / PLO6BK | -6 | .38 | 9.65 | .63 | 16 | 250 PSI |
| PLO8 / PLO8BK | -8 | .5 | 12.7 | .75 | 19.05 | 250 PSI |
| PL10 / PL10BK | -10 | .63 | 16 | .94 | 23.88 | 250 PSI |
| PL12 / PL12BK | -12 | .75 | 19.05 | 1.0 | 25.4 | 250 PSI |

PUSH-LOCK HOSE WITH CPE TUBE COMPOUND
Temperature range: -40° C to +100° C

- Available in Blue & Black. (Add BK for Black to end of hose part number.)
- Designed for use with push on hose fittings. Constructed with a high temperature Chlorinated Polyethylene (CPE) synthetic rubber.
- For use with coolants, oil, air, methanol, and fuel systems, such as E85, E10, lubricants.
- Where temperature exceeds to 158°F, the use of a clamp is recommended.
- Push-Lock Hose is sold in 25 & 50 ft lengths.



| PART NO | AN | (IN) | I.D. (MM) | (IN) | O.D. (MM) | OPERATING PRESS | BURST PRESS |
|---------------|-----|-------|-----------|-------|-----------|-----------------|-------------|
| TF03 / TF03BK | -3 | 9/64 | 3.56 | 1/4 | 6.35 | 4000 PSI | 12000 PSI |
| TF04 / TF04BK | -4 | 3/16 | 4.83 | 5/16 | 8 | 4000 PSI | 12000 PSI |
| TF06 / TF06BK | -6 | 21/64 | 8.13 | 27/64 | 10.92 | 3000 PSI | 10000 PSI |
| TF08 / TF08BK | -8 | 27/64 | 10.67 | 35/64 | 13.72 | 2500 PSI | 8000 PSI |
| TF10 / TF10BK | -10 | 33/64 | 12.95 | 5/8 | 16 | 2000 PSI | 6000 PSI |

PTFE HOSE
Temperature range: -35° C to +250° C

- Available in Stainless Steel outer cover OR Black PVC cover. (Add BK to end of hose part number.)
- Constructed with a PTFE inner liner with 308 stainless steel braid that resists leaks and fumes.
- Recommended for brake, E85, alcohol, nitro, transmission, clutch, nitrous, power steering, oiling, hydraulics and vacuum applications.
- PTFE Hose is sold in 25 & 50 ft lengths.

FULL FLOW SWIVEL HOSE FITTINGS

Add color to end of part number: Red/Blue (RB); Cutting Edge (CE); Nickel Polished (NP); Titanium Black (TiB); Black (BK)

These re-usable couplings are made from 6061-T651 Heat Treated Aluminum. They offer 360 degrees of adjustability after assembly.

STRAIGHT

| PART NO. | AN SIZE |
|-------------|---------|
| AN04-04FJ** | -4 |
| AN06-06FJ** | -6 |
| AN08-08FJ** | -8 |
| AN10-10FJ** | -10 |
| AN12-12FJ** | -12 |
| AN16-16FJ** | -16 |
| AN20-20FJ** | -20 |



45 DEGREE

| PART NO. | AN SIZE |
|---------------|---------|
| AN04-04FJ45** | -4 |
| AN06-06FJ45** | -6 |
| AN08-08FJ45** | -8 |
| AN10-10FJ45** | -10 |
| AN12-12FJ45** | -12 |
| AN16-16FJ45** | -16 |
| AN20-20FJ45** | -20 |



90 DEGREE

| PART NO. | AN SIZE |
|---------------|---------|
| AN04-04FJ90** | -4 |
| AN06-06FJ90** | -6 |
| AN08-08FJ90** | -8 |
| AN10-10FJ90** | -10 |
| AN12-12FJ90** | -12 |
| AN16-16FJ90** | -16 |
| AN20-20FJ90** | -20 |



120 DEGREE

| PART NO. | AN SIZE |
|----------------|---------|
| AN04-04FJ120** | -4 |
| AN06-06FJ120** | -6 |
| AN08-08FJ120** | -8 |
| AN10-10FJ120** | -10 |
| AN12-12FJ120** | -12 |
| AN16-16FJ120** | -16 |
| AN20-20FJ120** | -20 |



150 DEGREE

| PART NO. | AN SIZE |
|----------------|---------|
| AN04-04FJ150** | -4 |
| AN06-06FJ150** | -6 |
| AN08-08FJ150** | -8 |
| AN10-10FJ150** | -10 |
| AN12-12FJ150** | -12 |
| AN16-16FJ150** | -16 |
| AN20-20FJ150** | -20 |



180 DEGREE

| PART NO. | AN SIZE |
|----------------|---------|
| AN04-04FJ180** | -4 |
| AN06-06FJ180** | -6 |
| AN08-08FJ180** | -8 |
| AN10-10FJ180** | -10 |
| AN12-12FJ180** | -12 |
| AN16-16FJ180** | -16 |
| AN20-20FJ180** | -20 |



**Please indicate color when ordering.

ANODIZED PUSH-ON HOSE FITTINGS

Add color to end of part number: Red/Blue (RB); Cutting Edge (CE); Nickel Polished (NP); Titanium Black (TiB); Black (BK)

These push-on hose fittings are easy to assemble, lightweight and provide great performance. The fittings are machined from a high grade aluminum.

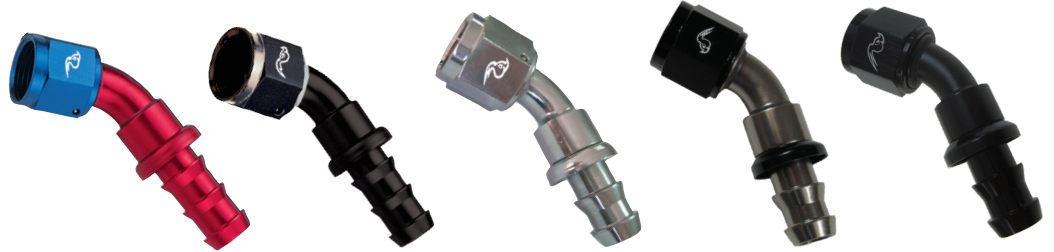
STRAIGHT

| PART NO. | AN SIZE |
|-------------|---------|
| PLO4-04FJ** | -4 |
| PLO6-06FJ** | -6 |
| PLO8-08FJ** | -8 |
| PL10-10FJ** | -10 |
| PL12-12FJ** | -12 |



45 DEGREE

| PART NO. | AN SIZE |
|---------------|---------|
| PL04-04FJ45** | -4 |
| PL06-06FJ45** | -6 |
| PL08-08FJ45** | -8 |
| PL10-10FJ45** | -10 |
| PL12-12FJ45** | -12 |



90 DEGREE

| PART NO. | AN SIZE |
|---------------|---------|
| PL04-04FJ90** | -4 |
| PL06-06FJ90** | -6 |
| PL08-08FJ90** | -8 |
| PL10-10FJ90** | -10 |
| PL12-12FJ90** | -12 |



120 DEGREE

| PART NO. | AN SIZE |
|----------------|---------|
| PL04-04FJ120** | -4 |
| PL06-06FJ120** | -6 |
| PL08-08FJ120** | -8 |
| PL10-10FJ120** | -10 |
| PL12-12FJ120** | -12 |



150 DEGREE

| PART NO. | AN SIZE |
|----------------|---------|
| PL04-04FJ150** | -4 |
| PL06-06FJ150** | -6 |
| PL08-08FJ150** | -8 |
| PL10-10FJ150** | -10 |
| PL12-12FJ150** | -12 |



180 DEGREE

| PART NO. | AN SIZE |
|----------------|---------|
| PL04-04FJ180** | -4 |
| PL06-06FJ180** | -6 |
| PL08-08FJ180** | -8 |
| PL10-10FJ180** | -10 |
| PL12-12FJ180** | -12 |



**Please indicate color when ordering.

CRIMP-ON HOSE ENDS FOR SS AND LW HOSE

Re-useable couplings made from 6061-T651 Heat Treated Aluminum. They offer 360 degrees of adjustability after assembly.

STRAIGHT

| PART NO. | AN SIZE |
|-------------|---------|
| CR06-06FJBK | 6 |
| CR08-08FJBK | 8 |
| CR10-10FJBK | 10 |
| CR12-12FJBK | 12 |
| CR16-16FJBK | 16 |



45 DEGREE

| PART NO. | AN SIZE |
|---------------|---------|
| CRO6-06FJ45BK | 6 |
| CRO8-08FJ45BK | 8 |
| CR10-10FJ45BK | 10 |
| CR12-12FJ45BK | 12 |
| CR16-16FJ45BK | 16 |



90 DEGREE

| PART NO. | AN SIZE |
|---------------|---------|
| CRO6-06FJ90BK | 6 |
| CRO8-08FJ90BK | 8 |
| CR10-10FJ90BK | 10 |
| CR12-12FJ90BK | 12 |
| CR16-16FJ90BK | 16 |



180° HOSE ENDS


| PART NO. | AN SIZE |
|----------------|---------|
| CRO6-06FJ180BK | 6 |
| CRO8-08FJ180BK | 8 |
| CR10-10FJ180BK | 10 |
| CR12-12FJ180BK | 12 |
| CR16-16FJ180BK | 16 |




CRIMP SLEEVE

| PART NO. | AN SIZE |
|-------------|---------|
| CRSLEEVE-06 | 6 |
| CRSLEEVE-08 | 8 |
| CRSLEEVE-10 | 10 |
| CRSLEEVE-12 | 12 |
| CRSLEEVE-16 | 16 |



 rjdrifts • Following ...

 rjdrifts Straight up one of the best and easiest AN fittings I have put together. @roadrunnerperformance killing the game making those easy to assemble pieces!! -

23w

CRIMP BEND HOSE ENDS FOR AN PTFE HOSE

Available in Blue & Black. To Order: Blue-add no color; Black-add BK at end of part number.

These re-useable couplings are made from 6061-T651 Heat Treated Aluminum. 360 degrees of adjustability after assembly.

STRAIGHT

| PART NO. | AN SIZE |
|--------------|---------|
| CTF04-04FJBK | 4 |
| CTF06-06FJBK | 6 |
| CTF08-08FJBK | 8 |
| CTF10-10FJBK | 10 |



90 DEGREE

| PART NO. | AN SIZE |
|----------------|---------|
| CTF04-04FJ90BK | 4 |
| CTF06-06FJ90BK | 6 |
| CTF08-08FJ90BK | 8 |
| CTF10-10FJ90BK | 10 |



45 DEGREE

| PART NO. | AN SIZE |
|----------------|---------|
| CTF04-04FJ45BK | 4 |
| CTF06-06FJ45BK | 6 |
| CTF08-08FJ45BK | 8 |
| CTF10-10FJ45BK | 10 |



CLAMP SLEEVE

| PART NO. | AN SIZE |
|--------------|---------|
| CTFSLEEVE-04 | 4 |
| CTFSLEEVE-06 | 6 |
| CTFSLEEVE-08 | 8 |
| CTFSLEEVE-10 | 10 |



PERFORMANCE QUICK DISCONNECT COUPLERS - MALE & FEMALE

QUICK DISCONNECT BRAKE LINE - MALE

| PART NO. | AN SIZE | AN BODY SIZE |
|-------------|---------|--------------|
| AN03-03BODY | AN 03 | AN 03 |



QUICK DISCONNECT BULK HEAD - MALE ALUM/BK

| PART NO. | AN SIZE | AN BODY SIZE |
|------------------|---------|--------------|
| AN06-08QDC-MBHBK | AN 06 | AN 06 |



QUICK DISCONNECT FUEL LINE - MALE - ALUM/BK

| PART NO. | AN SIZE | AN BODY SIZE |
|----------------|---------|--------------|
| AN04-05QDC-MBK | AN 06 | AN 5 BODY |
| AN06-05QDC-MBK | AN 06 | AN 5 BODY |
| AN06-08QDC-MBK | AN 06 | AN 8 BODY |
| AN08-08QDC-MBK | AN 08 | AN 8 BODY |
| AN10-12QDC-MBK | AN 10 | AN 12 BODY |
| AN12-12QDC-MBK | AN 12 | AN 12 BODY |



Both AN Male Ends are the Same AN SIZE

QUICK DISCONNECT FUEL LINE - FEMALE ALUM/BK

| PART NO. | AN SIZE | AN BODY SIZE |
|----------------|---------|--------------|
| AN04-05QDC-FBK | AN 04 | AN 5 BODY |
| AN06-05QDC-FBK | AN 06 | AN 5 BODY |
| AN06-08QDC-FBK | AN 06 | AN 8 BODY |
| AN08-08QDC-FBK | AN08 | AN 8 BODY |
| AN10-12QDC-FBK | AN10 | AN 12 BODY |
| AN12-12QDC-FBK | AN12 | AN 12 BODY |



QUICK CONNECT ADAPTERS

Available in Blue & Black. To Order: Blue-add no color; Black-add BK at end of part number.

AN TO MALE

| PART NO. | AN SIZE | DESCRIPTION |
|----------------|---------|-------------|
| AN06-5/16"-MQC | -6 | 5/16 |
| AN06-3/8"-MQC | -6 | 3/8 |
| AN08-3/8"-MQC | -8 | 3/8 |



AN TO MALE - 90 DEGREE

| PART NO. | AN SIZE | DESCRIPTION |
|------------------|---------|-------------|
| AN06-5/16"-MQC90 | -6 | 5/16 |
| AN06-3/8"-MQC90 | -6 | 3/8 |
| AN08-3/8"-MQC90 | -8 | 3/8 |



AN TO FEMALE

| PART NO. | AN SIZE | DESCRIPTION |
|----------------|---------|-------------|
| AN06-5/16"-FQC | -6 | 5/16 |
| AN06-3/8"-FQC | -6 | 3/8 |
| AN08-3/8"-FQC | -8 | 3/8 |



AN TO FEMALE - 90 DEGREE

| PART NO. | AN SIZE | DESCRIPTION |
|------------------|---------|-------------|
| AN06-5/16"-FQC90 | -6 | 5/16 |
| AN06-3/8"-FQC90 | -6 | 3/8 |
| AN08-3/8"-FQC90 | -8 | 3/8 |



AN TO FEMALE W/ AL FEMALE INSERT - STRAIGHT

| PART NO. | AN SIZE | DESCRIPTION |
|------------------|---------|-------------|
| AN06-5/16"-FQCFI | -6 | 5/16 |
| AN06-3/8"-FQCFI | -6 | 3/8 |
| AN08-3/8"-FQCFI | -8 | 3/8 |



AN TO FEMALE WITH AL FEMALE INSERT-90 DEGREE

| PART NO. | AN SIZE | DESCRIPTION |
|--------------------|---------|-------------|
| AN06-5/16"-FQCFI90 | -6 | 5/16 |
| AN06-3/8"-FQCFI90 | -6 | 3/8 |
| AN08-3/8"-FQCFI90 | -8 | 3/8 |



With Double-Locking Seal (allows more pressure)

FEMALE PLASTIC INSERT (White Only)

| PART NO. | AN SIZE | DESCRIPTION |
|-------------------|---------|-------------|
| FPI-5/16 | -6 | 5/16 |
| AN06-3/8"-FQCFI90 | -6 | 3/8 |



ANODIZED PTFE HOSE FITTINGS

Couplings made from 6061-T651 Heat Treated Aluminum. Please indicate color when ordering; add CE, RB, or BK to end of part number.

**Please indicate color when ordering. Add CE, RB or BK to end of part number **Straight, 45°, 90° available in Cutting Edge Black (CE) and Red/Blue (RB) and Black (BK). Extended Bends (120°, 150°, 180°) in Black (BK) ONLY.

STRAIGHT

| PART NO. | AN SIZE |
|-------------|---------|
| TF03-03FJ** | -3 |
| TF04-04FJ** | -4 |
| TF06-06FJ** | -6 |
| TF08-08FJ** | -8 |
| TF10-10FJ** | -10 |



120 DEGREE -Black Only

| PART NO. | AN SIZE |
|----------------|---------|
| TF03-03FJ120BK | -3 |
| TF04-04FJ120BK | -4 |
| TF06-06FJ120BK | -6 |
| TF08-08FJ120BK | -8 |
| TF10-10FJ120BK | -10 |



45 DEGREE

| PART NO. | AN SIZE |
|---------------|---------|
| TF03-03FJ45** | -3 |
| TF04-04FJ45** | -4 |
| TF06-06FJ45** | -6 |
| TF08-08FJ45** | -8 |
| TF10-10FJ45** | -10 |



150 DEGREE -Black Only

| PART NO. | AN SIZE |
|----------------|---------|
| TF03-03FJ150BK | -3 |
| TF04-04FJ150BK | -4 |
| TF06-06FJ150BK | -6 |
| TF08-08FJ150BK | -8 |
| TF10-10FJ150BK | -10 |



90 DEGREE

| PART NO. | AN SIZE |
|---------------|---------|
| TF03-03FJ90** | -3 |
| TF04-04FJ90** | -4 |
| TF06-06FJ90** | -6 |
| TF08-08FJ90** | -8 |
| TF10-10FJ90** | -10 |



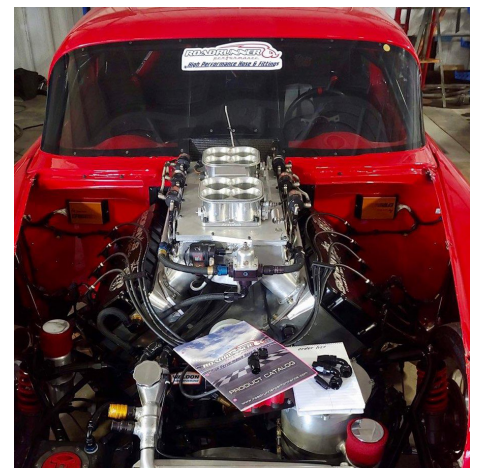
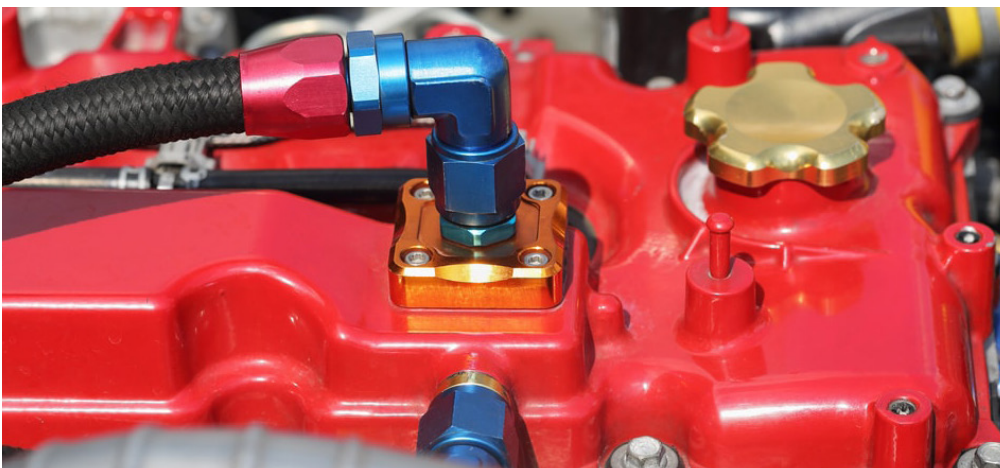
180 DEGREE -Black Only

| PART NO. | AN SIZE |
|----------------|---------|
| TF03-03FJ180BK | -3 |
| TF04-04FJ180BK | -4 |
| TF06-06FJ180BK | -6 |
| TF08-08FJ180BK | -8 |
| TF10-10FJ180BK | -10 |



REPLACEMENT OLIVE INSERT FOR PTFE FITTINGS

| PART NO. | AN SIZE |
|------------|---------|
| TF-03OLIVE | -3 |
| TF-04OLIVE | -4 |
| TF-06OLIVE | -6 |
| TF-08OLIVE | -8 |
| TF-10OLIVE | -10 |



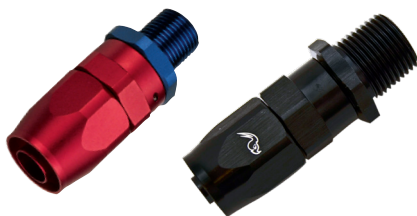
MALE PIPE & MALE AN THREAD HOSE ENDS

Available in Red/Blue and Black. **Please indicate color when ordering. Add RB or BK to end of part number.

MALE PIPE THREADS FORGED

STRAIGHT

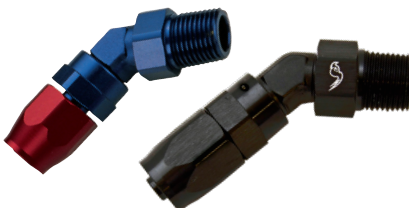
| PART NO. | HOSE SIZE | THREAD |
|-------------|-----------|----------|
| AN06-02MS** | -6 | 1/8" NPT |
| AN06-04MS** | -6 | 1/4" NPT |
| AN06-06MS** | -6 | 3/8" NPT |
| AN08-04MS** | -8 | 1/4" NPT |
| AN08-06MS** | -8 | 3/8" NPT |



| PART NO. | HOSE SIZE | THREAD |
|-------------|-----------|----------|
| AN08-08MS** | -8 | 1/2" NPT |
| AN10-06MS** | -10 | 3/8" NPT |
| AN10-08MS** | -10 | 1/2" NPT |
| AN12-08MS** | -12 | 1/2" NPT |
| AN12-12MS** | -12 | 3/4" NPT |

45 DEGREE

| PART NO. | HOSE SIZE | THREAD |
|---------------|-----------|----------|
| AN06-02MS45** | -6 | 1/8" NPT |
| AN06-04MS45** | -6 | 1/4" NPT |
| AN06-06MS45** | -6 | 3/8" NPT |
| AN08-04MS45** | -8 | 1/4" NPT |
| AN08-06MS45** | -8 | 3/8" NPT |



| PART NO. | HOSE SIZE | THREAD |
|---------------|-----------|----------|
| AN08-08MS45** | -8 | 1/2" NPT |
| AN10-06MS45** | -10 | 3/8" NPT |
| AN10-08MS45** | -10 | 1/2" NPT |
| AN12-08MS45** | -12 | 1/2" NPT |
| AN12-12MS45** | -12 | 3/4" NPT |

90 DEGREE

| PART NO. | HOSE SIZE | THREAD |
|---------------|-----------|----------|
| AN06-02MS90** | -6 | 1/8" NPT |
| AN06-04MS90** | -6 | 1/4" NPT |
| AN06-06MS90** | -6 | 3/8" NPT |
| AN08-04MS90** | -8 | 1/4" NPT |
| AN08-06MS90** | -8 | 3/8" NPT |



| PART NO. | HOSE SIZE | THREAD |
|---------------|-----------|----------|
| AN08-08MS90** | -8 | 1/2" NPT |
| AN10-06MS90** | -10 | 3/8" NPT |
| AN10-08MS90** | -10 | 1/2" NPT |
| AN12-08MS90** | -12 | 1/2" NPT |
| AN12-12MS90** | -12 | 3/4" NPT |

MALE AN THREADS

STRAIGHT

| PART NO. | HOSE SIZE | PIPE SIZE |
|-------------|-----------|---------------|
| AN06-06MJ** | -6 | 9/16"-18 AN 6 |
| AN08-08MJ** | -8 | 3/4"-16 AN 8 |



| PART NO. | HOSE SIZE | PIPE SIZE |
|-------------|-----------|------------|
| AN10-10MJ** | -10 | 7/8"-14 |
| AN12-12MJ** | -12 | 1-1/16"-12 |

FLARE TO PIPE ADAPTERS

Available in Blue and Black. To Order: Blue-add no color; Black-add BK to end of part number.

FLARE TO PIPE TEE

| PART NO. | AN SIZE | PIPE SIZE |
|------------|---------|-----------|
| AN03-02MPT | -3 | 1/8" NPT |
| AN04-02MPT | -4 | 1/8" NPT |
| AN06-04MPT | -6 | 1/4" NPT |
| AN08-06MPT | -8 | 3/8" NPT |
| AN10-08MPT | -10 | 1/2" NPT |
| AN12-12MPT | -12 | 3/4" NPT |
| AN16-16MPT | -16 | 1" NPT |



FLARE TO PIPE RUN TEE

| PART NO. | AN SIZE | PIPE SIZE |
|-------------|---------|-----------|
| AN03-02MPRT | -3 | 1/8" NPT |
| AN04-02MPRT | -4 | 1/8" NPT |
| AN06-04MPRT | -6 | 1/4" NPT |
| AN08-06MPRT | -8 | 3/8" NPT |
| AN10-08MPRT | -10 | 1/2" NPT |
| AN12-12MPRT | -12 | 3/4" NPT |
| AN16-16MPRT | -16 | 1" NPT |



FLARE TO PIPE ADAPTERS (CONTINUED)

Available in Blue and Black. To Order: Blue-add no color; Black-add BK to end of part number.

FLARE TO PIPE - 45 DEGREE

| PART NO. | AN SIZE | PIPE SIZE |
|-------------|---------|-----------|
| AN03-02MP45 | -3 | 1/8" NPT |
| AN04-02MP45 | -4 | 1/8" NPT |
| AN04-04MP45 | -4 | 1/4" NPT |
| AN06-02MP45 | -6 | 1/8" NPT |
| AN06-04MP45 | -6 | 1/4" NPT |
| AN06-06MP45 | -6 | 3/8" NPT |
| AN06-08MP45 | -6 | 1/2" NPT |
| AN08-04MP45 | -8 | 1/4" NPT |
| AN08-06MP45 | -8 | 3/8" NPT |
| AN08-08MP45 | -8 | 1/2" NPT |
| AN10-06MP45 | -10 | 3/8" NPT |
| AN10-08MP45 | -10 | 1/2" NPT |
| AN10-12MP45 | -10 | 3/4" NPT |
| AN12-08MP45 | -12 | 1/2" NPT |
| AN12-12MP45 | -12 | 3/4" NPT |
| AN16-12MP45 | -16 | 3/4" NPT |
| AN16-16MP45 | -16 | 1" NPT |



FLARE TO PIPE - STRAIGHT

| PART NO. | AN SIZE | PIPE SIZE | PART NO. | AN SIZE | PIPE SIZE |
|-----------|---------|-----------|-----------|---------|------------|
| AN03-02MP | -3 | 1/8" NPT | AN08-04MP | -8 | 1/4" NPT |
| AN03-04MP | -3 | 1/4" NPT | AN08-06MP | -8 | 3/8" NPT |
| AN04-02MP | -4 | 1/8" NPT | AN08-08MP | -8 | 1/2" NPT |
| AN04-04MP | -4 | 1/4" NPT | AN08-12MP | -8 | 3/4" NPT |
| AN06-02MP | -6 | 1/8" NPT | AN10-06MP | -10 | 3/8" NPT |
| AN06-04MP | -6 | 1/4" NPT | AN10-08MP | -10 | 1/2" NPT |
| AN06-06MP | -6 | 3/8" NPT | AN10-12MP | -10 | 3/4" NPT |
| AN06-08MP | -6 | 1/2" NPT | AN12-08MP | -12 | 1/2" NPT |
| | | | AN12-12MP | -12 | 3/4" NPT |
| | | | AN12-16MP | -12 | 1" NPT |
| | | | AN16-12MP | -16 | 3/4" NPT |
| | | | AN16-16MP | -16 | 1" NPT |
| | | | AN20-16MP | -20 | 1" NPT |
| | | | AN20-20MP | -20 | 1 1/4" NPT |



STRAIGHT PIPE BSP

| PART NO. | AN SIZE | PIPE SIZE |
|----------------|---------|-----------|
| AN04-1/8X28BSP | -4 | 1/8"X28 |
| AN06-1/8X28BSP | -6 | 1/8"X28 |
| AN06-1/4X19BSP | -6 | 1/4"X19 |
| AN06-3/8X19BSP | -6 | 1/4"X19 |
| AN06-1/2X14BSP | -6 | 1/2"X14 |



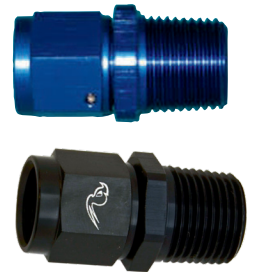
FLARE TO PIPE - 90 DEGREE

| PART NO. | AN SIZE | PIPE SIZE | PART NO. | AN SIZE | PIPE SIZE |
|-------------|---------|-----------|-------------|---------|-----------|
| AN03-02MP90 | -3 | 1/8" NPT | AN06-06MP90 | -6 | 3/8" NPT |
| AN04-02MP90 | -4 | 1/8" NPT | AN06-08MP90 | -6 | 1/2" NPT |
| AN04-04MP90 | -4 | 1/4" NPT | AN08-04MP90 | -8 | 1/4" NPT |
| AN06-02MP90 | -6 | 1/8" NPT | AN08-06MP90 | -8 | 3/8" NPT |
| AN06-04MP90 | -6 | 1/4" NPT | AN08-08MP90 | -8 | 1/2" NPT |
| | | | AN10-06MP90 | -10 | 3/8" NPT |
| | | | AN10-08MP90 | -10 | 1/2" NPT |
| | | | AN10-12MP90 | -10 | 3/4" NPT |
| | | | AN12-08MP90 | -12 | 1/2" NPT |
| | | | AN12-12MP90 | -12 | 3/4" NPT |
| | | | AN16-12MP90 | -16 | 3/4" NPT |
| | | | AN16-16MP90 | -16 | 1" NPT |



AN SWIVEL TO MALE NPT - STRAIGHT

| PART NO. | AN SIZE | PIPE SIZE |
|-------------|---------|-----------|
| ANFJ03-02MP | -3 | 1/8" NPT |
| ANFJ04-02MP | -4 | 1/8" NPT |
| ANFJ04-04MP | -4 | 1/4" NPT |
| ANFJ06-02MP | -6 | 1/8" NPT |
| ANFJ06-04MP | -6 | 1/4" NPT |
| ANFJ06-06MP | -6 | 3/8" NPT |
| ANFJ08-04MP | -8 | 1/4" NPT |
| ANFJ08-06MP | -8 | 3/8" NPT |
| ANFJ08-08MP | -8 | 1/2" NPT |
| ANFJ10-06MP | -10 | 3/8" NPT |
| ANFJ10-08MP | -10 | 1/2" NPT |
| ANFJ12-08MP | -12 | 1/2" NPT |
| ANFJ12-12MP | -12 | 3/4" NPT |



FEMALE AN TO SWIVEL MALE PIPE

90 DEGREE

| PART NO. | AN SIZE | PIPE SIZE |
|----------------|---------|-----------|
| ANFJ03-02MPS90 | -3 | 1/8" NPT |
| ANFJ04-02MPS90 | -4 | 1/8" NPT |
| ANFJ04-04MPS90 | -4 | 1/4" NPT |
| ANFJ06-02MPS90 | -6 | 1/8" NPT |
| ANFJ06-04MPS90 | -6 | 1/4" NPT |
| ANFJ06-06MPS90 | -6 | 3/8" NPT |
| ANFJ08-04MPS90 | -8 | 1/4" NPT |
| ANFJ08-06MPS90 | -8 | 3/8" NPT |
| ANFJ08-08MPS90 | -8 | 1/2" NPT |
| ANFJ10-06MPS90 | -10 | 3/8" NPT |
| ANFJ10-08MPS90 | -10 | 1/2" NPT |
| ANFJ12-08MPS90 | -12 | 1/2" NPT |
| ANFJ12-12MPS90 | -12 | 3/4" NPT |



MALE AN TO SWIVEL MALE PIPE

90 DEGREE

| PART NO. | AN SIZE | PIPE SIZE |
|----------------|---------|-----------|
| ANMJ03-02MPS90 | -3 | 1/8" NPT |
| ANMJ04-02MPS90 | -4 | 1/8" NPT |
| ANMJ04-04MPS90 | -4 | 1/4" NPT |
| ANMJ06-02MPS90 | -6 | 1/8" NPT |
| ANMJ06-04MPS90 | -6 | 1/4" NPT |
| ANMJ06-06MPS90 | -6 | 3/8" NPT |
| ANMJ08-04MPS90 | -8 | 1/4" NPT |
| ANMJ08-06MPS90 | -8 | 3/8" NPT |
| ANMJ08-08MPS90 | -8 | 1/2" NPT |
| ANMJ10-06MPS90 | -10 | 3/8" NPT |
| ANMJ10-08MPS90 | -10 | 1/2" NPT |
| ANMJ12-08MPS90 | -12 | 1/2" NPT |
| ANMJ12-12MPS90 | -12 | 3/4" NPT |



FLARE TO FLARE ADAPTERS

Available in Blue and Black. To Order: Blue-add no color; Black-add BK to end of part number.

MALE TO MALE REDUCER

| PART NO. | AN SIZE | AN SIZE | PART NO. | AN SIZE | AN SIZE |
|-----------|---------|---------|-----------|---------|---------|
| AN04-03AN | -4 | -3 | AN12-06AN | -12 | -6 |
| AN05-04AN | -5 | -4 | AN12-08AN | -12 | -8 |
| AN06-04AN | -6 | -4 | AN12-10AN | -12 | -10 |
| AN06-05AN | -6 | -5 | AN16-10AN | -16 | -10 |
| AN08-06AN | -8 | -6 | AN16-12AN | -16 | -12 |
| AN10-06AN | -10 | -6 | AN20-12AN | -20 | -12 |
| AN10-08AN | -10 | -8 | AN20-16AN | -20 | -16 |



FEMALE TO FEMALE SWIVEL

| 45 DEGREE | PART NO. | AN SIZE |
|-----------|-------------|---------|
| | ANFJ-03FJ45 | -3 |
| | ANFJ-04FJ45 | -4 |
| | ANFJ-06FJ45 | -6 |
| | ANFJ-08FJ45 | -8 |
| | ANFJ-10FJ45 | -10 |
| | ANFJ-12FJ45 | -12 |
| | ANFJ-16FJ45 | -16 |



| 90 DEGREE | PART NO. | AN SIZE |
|-------------|-------------|---------|
| | ANFJ-03FJ90 | -3 |
| | ANFJ-04FJ90 | -4 |
| | ANFJ-06FJ90 | -6 |
| | ANFJ-08FJ90 | -8 |
| | ANFJ-10FJ90 | -10 |
| | ANFJ-12FJ90 | -12 |
| ANFJ-16FJ90 | -16 | |



FEMALE TO AN MALE SWIVEL

| 45 DEGREE | PART NO. | AN SIZE |
|---------------|---------------|---------|
| | ANFJ03-03MJ45 | -3 |
| | ANFJ04-04MJ45 | -4 |
| | ANFJ06-06MJ45 | -6 |
| | ANFJ08-08MJ45 | -8 |
| | ANFJ10-10MJ45 | -10 |
| | ANFJ12-12MJ45 | -12 |
| ANFJ16-16MJ45 | -16 | |



| 90 DEGREE | PART NO. | AN SIZE |
|---------------|---------------|---------|
| | ANFJ03-03MJ90 | -3 |
| | ANFJ04-04MJ90 | -4 |
| | ANFJ06-06MJ90 | -6 |
| | ANFJ08-08MJ90 | -8 |
| | ANFJ10-10MJ90 | -10 |
| | ANFJ12-12MJ90 | -12 |
| ANFJ16-16MJ90 | -16 | |



FLARE ELBOW UNION

| 45 DEGREE | PART NO. | AN SIZE |
|-------------|-------------|---------|
| | AN03-03AN45 | -3 |
| | AN04-04AN45 | -4 |
| | AN06-06AN45 | -6 |
| | AN08-08AN45 | -8 |
| | AN10-10AN45 | -10 |
| | AN12-12AN45 | -12 |
| AN16-16AN45 | -16 | |



FLARE TO FLARE ADAPTERS (CONTINUED)

Available in Blue and Black. To Order: Blue-add no color; Black-add BK to end of part number.

FLARE ELBOW UNION

| 90 DEGREE | PART NO. | AN SIZE |
|-----------|-------------|---------|
| | AN03-03AN90 | -3 |
| | AN04-04AN90 | -4 |
| | AN06-06AN90 | -6 |
| | AN08-08AN90 | -8 |
| | AN10-10AN90 | -10 |
| | AN12-12AN90 | -12 |
| | AN16-16AN90 | -16 |



FLARE UNION ADAPTER

| PART NO. | AN SIZE |
|-----------|---------|
| AN03-03AN | -3 |
| AN04-04AN | -4 |
| AN06-06AN | -6 |
| AN08-08AN | -8 |
| AN10-10AN | -10 |
| AN12-12AN | -12 |
| AN16-16AN | -16 |



FLARE TEE

| PART NO. | AN SIZE |
|------------|---------|
| AN03-03ANT | -3 |
| AN04-04ANT | -4 |
| AN06-06ANT | -6 |
| AN08-08ANT | -8 |
| AN10-10ANT | -10 |
| AN12-12ANT | -12 |
| AN16-16ANT | -16 |



AN TEE TO FEMALE SWIVEL

| PART NO. | AN SIZE |
|--------------|---------|
| ANFJ03-ANMJT | -3 |
| ANFJ04-ANMJT | -4 |
| ANFJ06-ANMJT | -6 |
| ANFJ08-ANMJT | -8 |
| ANFJ10-ANMJT | -10 |
| ANFJ12-ANMJT | -12 |



AN TO FEMALE SWIVEL ON RUN TEE

| PART NO. | AN SIZE |
|---------------|---------|
| ANFJ03-ANMJRT | -3 |
| ANFJ04-ANMJRT | -4 |
| ANFJ06-ANMJRT | -6 |
| ANFJ08-ANMJRT | -8 |
| ANFJ10-ANMJRT | -10 |
| ANFJ12-ANMJRT | -12 |



AN FEMALE TO AN FEMALE WITH TUBE

| PART NO. | AN SIZE |
|----------------|---------|
| ANFJ04-FJ-TUBE | -4 |
| ANFJ06-FJ-TUBE | -6 |
| ANFJ08-FJ-TUBE | -8 |
| ANFJ10-FJ-TUBE | -10 |
| ANFJ12-FJ-TUBE | -12 |
| ANFJ16-FJ-TUBE | -16 |



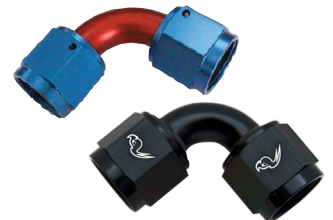
AN FEMALE TO AN FEMALE WITH TUBE

| 45 DEGREE | PART NO. | AN SIZE |
|-----------|------------------|---------|
| | ANFJ04-FJ-TUBE45 | -4 |
| | ANFJ06-FJ-TUBE45 | -6 |
| | ANFJ08-FJ-TUBE45 | -8 |
| | ANFJ10-FJ-TUBE45 | -10 |
| | ANFJ12-FJ-TUBE45 | -12 |
| | ANFJ16-FJ-TUBE45 | -16 |



AN FEMALE TO AN FEMALE WITH TUBE

| 90 DEGREE | PART NO. | AN SIZE |
|-----------|------------------|---------|
| | ANFJ04-FJ-TUBE90 | -4 |
| | ANFJ06-FJ-TUBE90 | -6 |
| | ANFJ08-FJ-TUBE90 | -8 |
| | ANFJ10-FJ-TUBE90 | -10 |
| | ANFJ12-FJ-TUBE90 | -12 |
| | ANFJ16-FJ-TUBE90 | -16 |



BULKHEAD ADAPTERS

Available in Blue and Black. To Order: Blue-add no color; Black-add BK to end of part number.

FLARE BULKHEAD

STRAIGHT

| PART NO. | AN SIZE |
|-----------|---------|
| AN03-ANBH | -3 |
| AN04-ANBH | -4 |
| AN06-ANBH | -6 |
| AN08-ANBH | -8 |
| AN10-ANBH | -10 |
| AN12-ANBH | -12 |
| AN16-ANBH | -16 |



90 DEGREE

| PART NO. | AN SIZE |
|-------------|---------|
| AN03-ANBH90 | -3 |
| AN04-ANBH90 | -4 |
| AN06-ANBH90 | -6 |
| AN08-ANBH90 | -8 |
| AN10-ANBH90 | -10 |
| AN12-ANBH90 | -12 |
| AN16-ANBH90 | -16 |



45 DEGREE

| PART NO. | AN SIZE |
|-------------|---------|
| AN03-ANBH45 | -3 |
| AN04-ANBH45 | -4 |
| AN06-ANBH45 | -6 |
| AN08-ANBH45 | -8 |
| AN10-ANBH45 | -10 |
| AN12-ANBH45 | -12 |
| AN16-ANBH45 | -16 |



TEE

| PART NO. | AN SIZE |
|------------|---------|
| AN03-ANBHT | -3 |
| AN04-ANBHT | -4 |
| AN06-ANBHT | -6 |
| AN08-ANBHT | -8 |
| AN10-ANBHT | -10 |
| AN12-ANBHT | -12 |
| AN16-ANBHT | -16 |



BULKHEAD TEE ON RUN

| TEE | PART NO. | AN SIZE |
|-----|-------------|---------|
| | AN03-ANBHRT | -3 |
| | AN04-ANBHRT | -4 |
| | AN06-ANBHRT | -6 |
| | AN08-ANBHRT | -8 |
| | AN10-ANBHRT | -10 |
| | AN12-ANBHRT | -12 |
| | AN16-ANBHRT | -16 |



BULKHEAD NUT

| PART NO. | AN SIZE | THREAD |
|------------|---------|------------|
| AN03-BHNUT | -3 | 3/8"-24 |
| AN04-BHNUT | -4 | 7/16"-20 |
| AN06-BHNUT | -6 | 9/16"-18 |
| AN08-BHNUT | -8 | 3/4"-16 |
| AN10-BHNUT | -10 | 7/8"-14 |
| AN12-BHNUT | -12 | 1 1/16"-12 |
| AN16-BHNUT | -16 | 1 5/16"-12 |



FLARE TO METRIC ADAPTER

Available in Blue & Black. To Order: Blue-add no color; Black-add BK at end of part number.

FLARE TO METRIC STRAIGHT

| PART NO. | AN SIZE | PART NO. | AN SIZE | PART NO. | AN SIZE |
|----------------|---------|---------------|---------|---------------|---------|
| AN04-10MMx1.0 | -4 | AN06-18MMx1.5 | -6 | AN10-18MMx1.5 | -10 |
| AN04-10MMx1.25 | -4 | AN06-20MMx1.5 | -6 | AN10-20MMx1.5 | -10 |
| AN04-10MMx1.5 | -4 | AN06-22MMx1.5 | -6 | AN10-22MMx1.5 | -10 |
| AN06-10MMx1.0 | -6 | AN08-12MMx1.5 | -8 | AN10-24MMx1.5 | -10 |
| AN06-10MMx1.25 | -6 | AN08-14MMx1.5 | -8 | AN12-14MMx1.5 | -12 |
| AN06-10MMx1.5 | -6 | AN08-16MMx1.5 | -8 | AN12-16MMx1.5 | -12 |
| AN06-12MMx1.0 | -6 | AN08-18MMx1.5 | -8 | AN12-18MMx1.5 | -12 |
| AN06-12MMx1.25 | -6 | AN08-20MMx1.5 | -8 | AN12-20MMx1.5 | -12 |
| AN06-12MMx1.5 | -6 | AN08-22MMx1.5 | -8 | AN12-22MMx1.5 | -12 |
| AN06-14MMx1.5 | -6 | AN10-14MMx1.5 | -10 | AN12-24MMx1.5 | -12 |
| AN06-16MMx1.5 | -6 | AN10-16MMx1.5 | -10 | | |



FLARE TO O-RING ADAPTERS

Available in Blue & Black. To Order: Blue-add no color; Black-add BK at end of part number.


MALE AN TO SWIVEL MALE O-RING - 90 DEGREE AN TO O-RING


| PART NO. | AN SIZE | THREAD |
|-------------------------|---------|---------------|
| ANMJ06-7/16"-20OR90 | -6 | 7/16" - 20 |
| ANMJ06-1/2"-20OR90 | -6 | 1/2" - 20 |
| ANMJ06-9/16"-18OR90 | -6 | 9/16" - 18 |
| ANMJ06-3/4"-16OR90 | -6 | 3/4" - 16 |
| ANMJ06-9/16"-24OR90 | -6 | 9/16" - 24 |
| ANMJ06-5/8"-18OR90 | -6 | 5/8" - 18 |
| ANMJ08-9/16"-18OR90 | -8 | 9/16" - 18 |
| ANMJ08-3/4"-16OR90 | -8 | 3/4" - 16 |
| ANMJ08-7/8"-14OR90 | -8 | 7/8" - 14 |
| ANMJ08-7/8"-20OR90 | -8 | 7/8" - 20 |
| ANMJ10-3/4"-16OR90 | -10 | 3/4" - 16 |
| ANMJ10-7/8"-14OR90 | -10 | 7/8" - 14 |
| ANMJ10-1-1/16"-12OR90 | -10 | 1-1/16" - 12 |
| ANMJ12-7/8"-14OR90 | -12 | 7/8" - 14 |
| ANMJ12-1-1/16"-12OR90 | -12 | 1-1/16" - 12 |
| ANMJ06-12MMx1-1/4"-OR90 | -6 | 12MM x 1-1/4" |
| ANMJ06-12MMx1-1/2"-OR90 | -6 | 12MM x 1-1/2" |



| PART NO. | AN SIZE | THREAD |
|-----------|---------|--------------|
| AN03-03OR | -3 | 3/8" - 24 |
| AN03-04OR | -3 | 7/16" - 20 |
| AN04-03OR | -4 | 3/8" - 24 |
| AN04-04OR | -4 | 7/16" - 20 |
| AN04-06OR | -4 | 9/16" - 18 |
| AN04-08OR | -4 | 3/4" - 16 |
| AN06-04OR | -6 | 7/16" - 20 |
| AN06-06OR | -6 | 9/16" - 18 |
| AN06-08OR | -6 | 3/4" - 16 |
| AN06-10OR | -6 | 7/8" - 14 |
| AN08-06OR | -8 | 9/16" - 18 |
| AN08-08OR | -8 | 3/4" - 16 |
| AN08-10OR | -8 | 7/8" - 14 |
| AN10-06OR | -10 | 9/16" - 18 |
| AN10-08OR | -10 | 3/4" - 16 |
| AN10-10OR | -10 | 7/8" - 14 |
| AN10-12OR | -10 | 1-1/16" - 12 |
| AN10-16OR | -10 | 1-5/16" - 12 |
| AN12-08OR | -12 | 3/4" - 16 |
| AN12-10OR | -12 | 7/8" - 14 |
| AN12-12OR | -12 | 1-1/16" - 12 |
| AN16-12OR | -16 | 1-1/16" - 12 |
| AN16-16OR | -16 | 1-5/16" - 12 |



 rjdrifts • Following ...

 rjdrifts Installing a few more -10an paired with @roadrunnerperformance fittings. - Things going to look clean!

20w

CAPS & PLUGS

Available in Blue and Black. To Order: Blue-add no color; Black-add BK to end of part number.

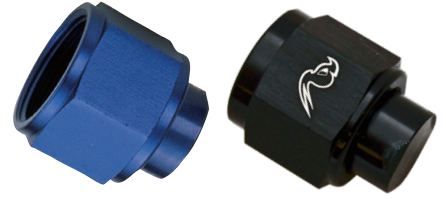
AN FLARE PLUG

| PART NO. | AN SIZE |
|-----------|---------|
| AN03-PLUG | -3 |
| AN04-PLUG | -4 |
| AN06-PLUG | -6 |
| AN08-PLUG | -8 |
| AN10-PLUG | -10 |
| AN12-PLUG | -12 |
| AN16-PLUG | -16 |



AN FLARE CAP

| PART NO. | AN SIZE |
|----------|---------|
| AN03-CAP | -3 |
| AN04-CAP | -4 |
| AN06-CAP | -6 |
| AN08-CAP | -8 |
| AN10-CAP | -10 |
| AN12-CAP | -12 |
| AN16-CAP | -16 |



O-RING PLUG

| PART NO. |
|---------------|
| O-RINGPLUG-03 |
| O-RINGPLUG-04 |
| O-RINGPLUG-06 |
| O-RINGPLUG-08 |
| O-RINGPLUG-10 |
| O-RINGPLUG-12 |
| O-RINGPLUG-16 |



SOCKET PLUG

| PART NO. | NPT SIZE |
|---------------|----------|
| SOCKETPLUG-01 | 1/16" |
| SOCKETPLUG-02 | 1/8" |
| SOCKETPLUG-04 | 1/4" |
| SOCKETPLUG-06 | 3/8" |
| SOCKETPLUG-08 | 1/2" |
| SOCKETPLUG-12 | 3/4" |
| SOCKETPLUG-16 | 1" |



AN CAP FEMALE PLASTIC - RED

| PART NO. | AN SIZE |
|------------|---------|
| AN03-CAP-P | -3 |
| AN04-CAP-P | -4 |
| AN06-CAP-P | -6 |
| AN08-CAP-P | -8 |
| AN10-CAP-P | -10 |
| AN12-CAP-P | -12 |
| AN16-CAP-P | -16 |
| AN20-CAP-P | -20 |



AN PLUG MALE PLASTIC - RED

| PART NO. | AN SIZE |
|-------------|---------|
| AN03-PLUG-P | -3 |
| AN04-PLUG-P | -4 |
| AN06-PLUG-P | -6 |
| AN08-PLUG-P | -8 |
| AN10-PLUG-P | -10 |
| AN12-PLUG-P | -12 |
| AN16-PLUG-P | -16 |
| AN20-PLUG-P | -20 |



SPECIALTY ADAPTERS

Available in Blue & Black. To Order: Blue-add no color; Black-add BK at end of part number.
(unless color specified below)

AN FLARE REDUCER FEMALE/MALE

| PART NO. | ORB | AN |
|---------------|-----|-----|
| ANFJ03-04MJOR | -3 | -4 |
| ANFJ03-06MJOR | -3 | -6 |
| ANFJ04-03MJOR | -4 | -3 |
| ANFJ04-06MJOR | -4 | -6 |
| ANFJ04-08MJOR | -4 | -8 |
| ANFJ06-03MJOR | -6 | -3 |
| ANFJ06-04MJOR | -6 | -4 |
| ANFJ06-08MJOR | -6 | -8 |
| ANFJ06-10MJOR | -6 | -10 |
| ANFJ08-04MJOR | -8 | -4 |
| ANFJ08-06MJOR | -8 | -6 |
| ANFJ08-10MJOR | -8 | -10 |
| ANFJ08-12MJOR | -8 | -12 |
| ANFJ10-04MJOR | -10 | -4 |
| ANFJ10-06MJOR | -10 | -6 |
| ANFJ10-08MJOR | -10 | -8 |
| ANFJ10-12MJOR | -10 | -12 |
| ANFJ10-16MJOR | -10 | -16 |
| ANFJ12-08MJOR | -12 | -8 |
| ANFJ12-10MJOR | -12 | -10 |
| ANFJ12-16MJOR | -12 | -16 |
| ANFJ16-12MJOR | -16 | -12 |



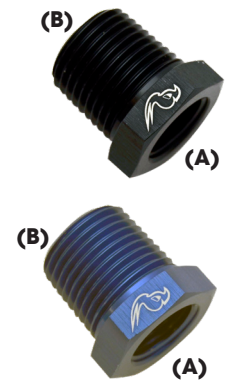
AN TO INVERTED FLARE

| PART NO. | THREAD SIZE |
|-------------------|-------------|
| AN06-7/16"-24INV | 7/16"-24 |
| AN06-1/2"-20INV | 1/2"-20 |
| AN06-5/8"-18INV | 5/8"-18 |
| AN06-11/16"-18INV | 11/16"-18 |
| AN08-1/2"-20INV | 1/2"-20 |
| AN08-5/8"-18INV | 5/8"-18 |



NPT BUSHING REDUCER

| PART NO. | NPT (A) | NPT (B) |
|-----------|---------|---------|
| MP04-02BR | 1/8 | 1/4 |
| MP06-02BR | 1/8 | 3/8 |
| MP06-04BR | 1/4 | 3/8 |
| MP08-02BR | 1/8 | 1/2 |
| MP08-04BR | 1/4 | 1/2 |
| MP08-06BR | 3/8 | 1/2 |
| MP12-04BR | 1/4 | 3/4 |
| MP12-06BR | 3/8 | 3/4 |
| MP12-08BR | 1/2 | 3/4 |



OIL COOLER ADAPTER - Black Only

| PART NO. | AN SIZE |
|----------------|---------|
| OILA04-22MX1.5 | -4 |
| OILA06-22MX1.5 | -6 |
| OILA08-22MX1.5 | -8 |
| OILA10-22MX1.5 | -10 |
| OILA12-22MX1.5 | -12 |
| OILA16-22MX1.5 | -16 |



FEMALE AN TO MALE AN W/PORT

| PART NO. | AN SIZE |
|---------------|---------|
| ANFJ04-04MJ-P | -4 |
| ANFJ06-06MJ-P | -6 |
| ANFJ08-08MJ-P | -8 |



MALE AN TO MALE AN WITH 1/8" PORT IN HEX

| PART NO. | AN SIZE |
|-----------------|---------|
| ANMJ03-03MJ-PBK | -3 |
| ANMJ04-04MJ-PBK | -4 |
| ANMJ06-06MJ-PBK | -6 |
| ANMJ08-08MJ-PBK | -8 |



SPECIALTY ADAPTERS (CONTINUED)

Available in Blue & Black. To Order: Blue-add no color; Black-add BK at end of part number.
(unless color specified below)

MALE PIPE COUPLER

| PART NO. | NPT SIZE |
|-----------|----------|
| MP02-02MP | 1/8 |
| MP04-04MP | 1/4 |
| MP06-06MP | 3/8 |
| MP08-08MP | 1/2 |
| MP12-12MP | 3/4 |
| MP16-16MP | 1 |



FEMALE PIPE COUPLER

| PART NO. | PIPE SIZE |
|-----------|-----------|
| FP02-COUP | 1/8"NPT |
| FP04-COUP | 1/4"NPT |
| FP06-COUP | 3/8"NPT |
| FP08-COUP | 1/2"NPT |
| FP12-COUP | 3/4"NPT |
| FP16-COUP | 1"NPT |



FEMALE TEE

| PART NO. | AN SIZE |
|----------|---------|
| FJ03-T | -3 |
| FJ04-T | -4 |
| FJ06-T | -6 |
| FJ08-T | -8 |
| FJ10-T | -10 |
| FJ12-T | -12 |



FEMALE PIPE TEE

| PART NO. | PIPE SIZE |
|----------|-----------|
| FP02-T | 1/8"NPT |
| FP04-T | 1/4"NPT |
| FP06-T | 3/8"NPT |
| FP08-T | 1/2"NPT |
| FP12-T | 3/4"NPT |



FEMALE PIPE COUPLER - 90 DEGREE

| PART NO. | AN SIZE |
|-------------|---------|
| FP02-02FP90 | -2 |
| FP04-04FP90 | -4 |
| FP06-06FP90 | -6 |
| FP08-08FP90 | -8 |



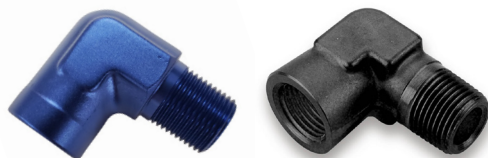
NPT FEMALE TO MALE NPT - 45 DEGREE

| PART NO. | AN SIZE |
|-------------|---------|
| FP02-02MP45 | -2 |
| FP04-04MP45 | -4 |
| FP06-06MP45 | -6 |
| FP08-08MP45 | -8 |



NPT FEMALE TO MALE NPT - 90 DEGREE

| PART NO. | AN SIZE |
|-------------|---------|
| FP02-02MP90 | -2 |
| FP04-04MP90 | -4 |
| FP06-06MP90 | -6 |
| FP08-08MP90 | -8 |



CARBURETOR ADAPTERS

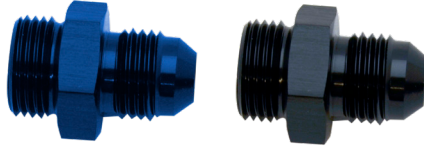
Available in Blue and Black. To Order: Blue-add no color; Black-add BK to end of part number.

20 THREAD

6 AN MALE TO 5/8

PART NO.

AN06-5/8-20



6 AN MALE TO 1

PART NO.

AN06-1-20



6 AN MALE TO 7/8 & 8 AN TO 7/8 (Regular and Long)

PART NO.

AN06-7/8-20

AN08-7/8-20

AN06-7/8-20L

AN08-7/8-20L



POWER STEERING/FUEL INJ O-RING

PART NO.

AN06-14mmx1.5OR

AN06-16mmx1.5OR

AN06-18mmx1.5OR



6 AN MALE TO 9/16 - 24 THREAD

PART NO.

AN06-9/16-24



FUEL INJ. METRIC FEMALE O-RING

PART NO.

AN06-14mmx1.5FOR

AN06-16mmx1.5FOR



PART NO.

AN06-9/16-24L



DUAL FEED CARBURETOR EXTENDED ADAPTER

PART NO.

AN06-7/8-20extS

AN06-7/8-20extL

AN08-7/8-20extS

AN08-7/8-20extL



DUAL FEED CARBURETOR KITS

PART NO.

DFK-600**

DFK-800**

Billet Dual Feed 4150/4150HP Fuel Line Kit

Swivel-Seal billet single feed fuel line kit that fits Holley 4150/4150HP models with 7/8-20 threads and 9.5" Center to Center inlets available in AN6 and AN8



** Available in Black (BK), Red/Blue (RB), Nickel Polished (NP)

MALE PIPE TO BARB ADAPTERS

Available in Blue and Black. To Order: Blue-add no color; Black-add BK to end of part number.

PIPE TO BARB

STRAIGHT

| PART NO. | PIPE SIZE | HOSE SIZE |
|-------------|-----------|-----------|
| MP02-04BARB | 1/8" NPT | -4 |
| MP04-06BARB | 1/4" NPT | -6 |
| MP06-08BARB | 3/8" NPT | -8 |
| MP08-10BARB | 1/2" NPT | -10 |
| MP12-12BARB | 3/4" NPT | -12 |



45 DEGREE

| PART NO. | PIPE SIZE | HOSE SIZE |
|---------------|-----------|-----------|
| MP02-04BARB45 | 1/8" NPT | -4 |
| MP04-06BARB45 | 1/4" NPT | -6 |
| MP06-08BARB45 | 3/8" NPT | -8 |
| MP08-10BARB45 | 1/2" NPT | -10 |
| MP12-12BARB45 | 3/4" NPT | -12 |



90 DEGREE

| PART NO. | PIPE SIZE | HOSE SIZE |
|---------------|-----------|-----------|
| MP02-04BARB90 | 1/8" NPT | -4 |
| MP04-06BARB90 | 1/4" NPT | -6 |
| MP06-08BARB90 | 3/8" NPT | -8 |
| MP08-10BARB90 | 1/2" NPT | -10 |
| MP12-12BARB90 | 3/4" NPT | -12 |



ALUMINUM HARD LINE ADAPTERS

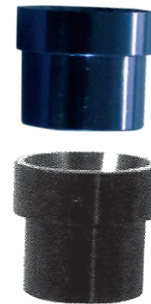
TUBE NUT

| PART NO. | TUBE |
|-----------|-------|
| AN03-TNUT | 3/16" |
| AN04-TNUT | 1/4" |
| AN06-TNUT | 3/8" |
| AN08-TNUT | 1/2" |
| AN10-TNUT | 5/8" |
| AN12-TNUT | 3/4" |



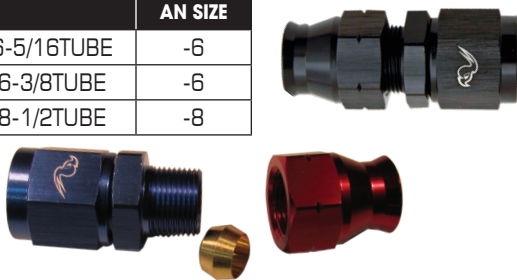
TUBE SLEEVE

| PART NO. | TUBE |
|-----------|-------|
| AN03-TSLV | 3/16" |
| AN04-TSLV | 1/4" |
| AN05-TSLV | 5/16" |
| AN06-TSLV | 3/8" |
| AN08-TSLV | 1/2" |
| AN10-TSLV | 5/8" |
| AN12-TSLV | 3/4" |



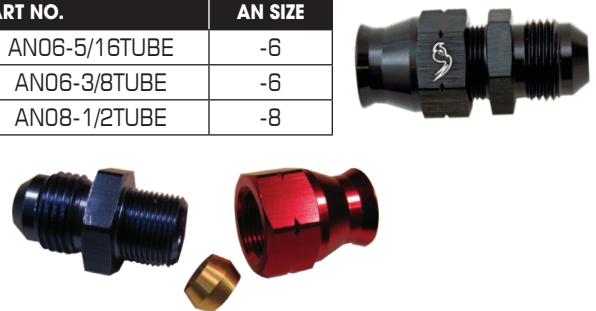
FEMALE AN TO TUBE

| PART NO. | AN SIZE |
|-----------------|---------|
| ANFJ06-5/16TUBE | -6 |
| ANFJ06-3/8TUBE | -6 |
| ANFJ08-1/2TUBE | -8 |



MALE AN TO TUBE

| PART NO. | AN SIZE |
|---------------|---------|
| AN06-5/16TUBE | -6 |
| AN06-3/8TUBE | -6 |
| AN08-1/2TUBE | -8 |



OLIVE INSERT FOR TUBE FITTINGS

| PART NO. | AN SIZE |
|---------------|---------|
| AN06-OLIVE-05 | -6 |
| AN06-OLIVE-06 | -6 |
| AN08-OLIVE-08 | -8 |



ALUMINUM HARD LINE COIL LINE

| PART NO. | TUBE SIZE |
|----------|-----------|
| ALHL-05 | 5/16 |
| ALHL-06 | 3/8 |
| ALHL-08 | 1/2 |



Price per foot. Available in raw aluminum or black hard anodized. 250 PSI Working PSI. Sold in 25- & 50-foot coils.

FUEL ACCESSORIES

Available in Blue and Black. To Order: Blue-add no color; Black-add BK to end of part number.

FUEL ACCESSORIES

FUEL FILTER

PART NO.

FF-06**

FF-08**

Fuel Filters include
FF-ELMT30 (30-micron
bronze element)

**Indicate color: BL-Blue; BK-Black; RD-Red; NP-Nickel Polished



BILLET FUEL FILTER

PART NO.

AN10-10BFF

**indicate color: BL-Blue; BK-Black



BRONZE ELEMENT

PART NO.

FF-ELMT30

FF-ELMT150



FUEL BLOCK

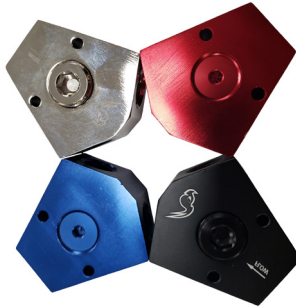
PART NO.

PIPE SIZE

FB-6-6** 3/8 IN 3/8 OUT

FB-8-6** 1/2 IN 3/8 OUT

FB-8-8** 1/2 IN 1/2 OUT



Available Colors: Blue (BL); Red (RD); Nickel Polished (NP); Black (BK)

Y-ADAPTERS

PART NO.

A

B

Y-ADAPTER03-03 -03 -03

Y-ADAPTER04-03 -04 -03

Y-ADAPTER04-04 -04 -04

Y-ADAPTER06-04 -06 -04

Y-ADAPTER06-06 06 -06

Y-ADAPTER08-06 -08 -06

Y-ADAPTER08-08 -08 -08

Y-ADAPTER10-08 10 -08

Y-ADAPTER10-10 -10 -10

Y-ADAPTER12-10 -12 -10

Y-ADAPTER12-12 12 -12

Y-ADAPTER16-16 16 -16



FUEL CELL FITTINGS

PART NO.

TUBE SIZE

FUELCELL-06BK -6

FUELCELL-08BK -8

FUELCELL-10BK -10

FUELCELL-12BK -12



Available in Black Only

TANK WELDS

MALE

| PART NO. | AN SIZE |
|----------|---------|
| TWM-04 | -4 |
| TWM-06 | -6 |
| TWM-08 | -8 |
| TWM-10 | -10 |
| TWM-12 | -12 |
| TWM-16 | -16 |
| TWM-20 | -20 |

FEMALE

| PART NO. | THREAD |
|----------|----------|
| TWF-02 | 1/8" NPT |
| TWF-04 | 1/4" NPT |
| TWF-06 | 3/8" NPT |
| TWF-08 | 1/2" NPT |
| TWF-12 | 3/4" NPT |



HOSE FINISHERS

| PART NO. | AN SIZE |
|----------|---------|
| HF-04** | -4 |
| HF-06** | -6 |
| HF-08** | -8 |
| HF-10** | -10 |



| PART NO. | AN SIZE |
|----------|---------|
| HF-12** | -12 |
| HF-16** | -16 |
| HF-24** | -24 |

**indicate color: BL - Blue; BK - Black; RD-Red; NP-Nickel Polished

HOSE SEPARATORS

| PART NO. | SIZE |
|----------|--------|
| HS-03 | 1/4" |
| HS-04 | 7/16" |
| HS-05 | 1/2" |
| HS-06 | 17/32" |
| HS-07 | 9/16" |
| HS-08 | 5/8" |
| HS-10 | 3/4" |
| HS-12 | 7/8" |



Available Colors: Blue (BL); Red (RD); Nickel Polished (NP); Black (BK)

ADEL CUSHIONED P-CLAMPS

| PART NO. | I.D. |
|----------------|---------------|
| ADELCLAMP-03BK | 3/16" 4.8mm |
| ADELCLAMP-04BK | 1/4" 6.4mm |
| ADELCLAMP-05BK | 5/16" 7.9mm |
| ADELCLAMP-06BK | 3/8" 9.5mm |
| ADELCLAMP-08BK | 1/2" 12.7mm |
| ADELCLAMP-09BK | 9/16" 14.3mm |
| ADELCLAMP-10BK | 5/8" 15.9mm |
| ADELCLAMP-12BK | 3/4" 19.1mm |
| ADELCLAMP-16BK | 1" 25.4mm |
| ADELCLAMP-18BK | 1-1/8" 28.6mm |
| ADELCLAMP-20BK | 1-1/4" 31.8mm |



FUEL ACCESSORIES (CONTINUED)

Available in Blue and Black. To Order: Blue-add no color; Black-add BK to end of part number.

ONE WAY CHECK VALVE

| PART NO. | AN SIZE |
|--------------|---------|
| AN06-CKVALVE | -6 |
| AN08-CKVALVE | -8 |
| AN10-CKVALVE | -10 |



**Black Only

AN MALE BALL VALVE

| PART NO. | AN SIZE |
|-----------------|---------|
| N06-06SOVALVE* | -6 |
| AN08-08SOVALVE* | -8 |
| AN10-10SOVALVE* | -10 |



**indicate color: BL - Blue; BK - Black

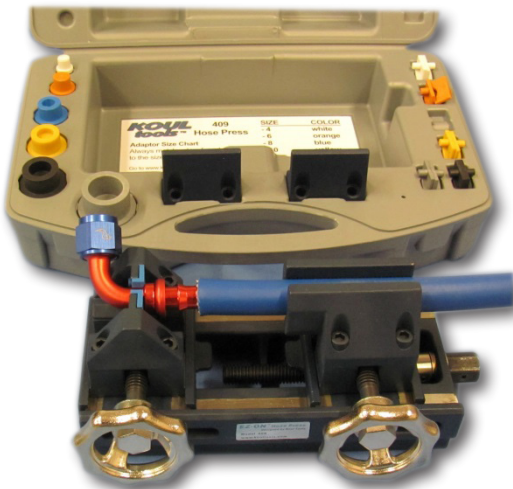
TOOLS

Available in Blue and Black. To Order: Blue-add no color; Black-add BK to end of part number.

KOUL TOOL

| PART NO. |
|----------|
| KT1 |

The Koul Tool installs push-on hose fittings in seconds.



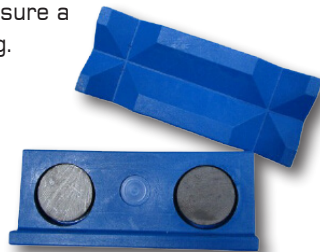
ALUMINUM VICE JAW

| PART NO. |
|----------|
| VJ-1 |
| VJ-2 |

The solid one piece billet aluminum Vice Jaws are a must for the professional. Built with super powerful magnet to ensure a safe, secure grip when assembling.



The VJ-2 Plastic Vice Jaw is suggested for assembling larger size AN fittings.



AN WRENCH WHEELIE BAR



| PART NO. |
|----------------|
| WR-WHEELIE-BAR |

AN ADJUSTABLE WRENCH -Black Only



Special Roadrunner Performance Design

| PART NO. |
|----------|
| WR-ADJBK |

Adjustable up to size 16.

AN ALLOY WRENCHES

| PART NO. | AN SIZE |
|----------|-------------|
| WR-04 | -4 |
| WR-06 | -6 |
| WR-08 | -8 |
| WR-10 | -10 |
| WR-12 | -12 |
| WR-16 | -16 |
| WR-SET | SET OF 6pcs |
| WR-20 | -20 |



**Indicate color: Note: Size 20 wrench not in set SET: BK - Black; MC - Multi Color. INDIV. WRENCHES: BK - Black; BL - Blue.

TOOLS

HOSE INSTALLATION KIT



| PART NO. |
|----------|
| HI-1 |

See website for HI-1 Tool assembly instructions.

ROADRUNNER COLOR DISPLAY SIGN

30" X 10"

PART NO.
RRSIGN-1

CORRUGATED PLASTIC
WITH VELCRO FASTENERS



ROADRUNNER AUTOMOTIVE DECAL

24.25" X 5.5"

9.5" X 3"

PART NO.
RRDECAL-1

PART NO.
RRDECAL-2



CLAMSHELL DISPLAYS (sold at cost)

| NO. | Overall Size | Cavity Size |
|------|--------------|-------------|
| CS-A | 2.8" X 4" | 1.4" X 2.4" |
| CS-B | 3.9" X 5.8" | 2.5" X 3.1" |
| CS-C | 4.7" X 6.25" | 3.7" X 4.1" |
| CS-D | 8" X 8" | 4.6" X 7" |

**ALL SIZES ARE SHOWN
ON DISPLAY BOARD**



WINDOW DECAL

16" X 5"

PART NO.
WD-1



ROADRUNNER BOUQUET STICKER

6" x 6"

PART NO.
RRSTICKERBOUQ



WARRANTY:

Products shall be free from defects in material and workmanship for a period of 90 days after shipment. If the product purchased is defective in any way during the 90-day period, please contact Roadrunner Performance for an RGA number to return the product for a full evaluation. Roadrunner Performance will replace defective product at no charge to the customer. This comprises the entire warranty and Roadrunner Performance makes no other claim.



FAMILY OWNED & OPERATED

TERMS AND CONDITIONS

FREIGHT POLICY:

SINGLE SHIPMENT ORDERS QUALIFY FOR PREPAID FREIGHT AS FOLLOWS: NET ORDER VALUE OF \$500+ WILL SHIP PREPAID (US ONLY); AND ORDERS OF \$600+ (CANADA) WILL BE SHIPPED PREPAID. ROADRUNNER PERFORMANCE SELECTS ROUTING AND CARRIER FOR ALL PREPAID SHIPMENTS. ALL BACK ORDERS ARE SHIPPED PREPAID.

PAYMENT TERMS:

2% 10, NET 30. A 3% SERVICE CHARGE WILL BE ADDED ON TO ANY PAYMENTS THAT ARE 31+ DAYS PAST DUE FROM DATE ON INVOICE. CHECKS ARE ACCEPTED FOR PAYMENT. NO CASH PAYMENTS. ORDERS PAID VIA CREDIT CARD WILL BE CHARGED A \$3 TRANSACTION FEE. CREDIT TERMS MAY BE ESTABLISHED UPON SUBMISSION & APPROVAL OF A COMPLETED CREDIT APPLICATION. PLEASE CONTACT ROADRUNNER PERFORMANCE FOR MORE INFORMATION. ANY PAST DUE BALANCES MUST BE SATISFIED PRIOR TO NEW ORDER SHIPMENTS.

RETURNS:

CONTACT ROADRUNNER PERFORMANCE TO REQUEST AN RGA (RETURNS GOOD AUTHORIZATION) NUMBER PRIOR TO RETURNING ANY PRODUCTS. THE RGA NUMBER MUST APPEAR ON ALL PAPERWORK. PRODUCT BEING RETURNED FOR CREDIT MUST BE IN SALEABLE CONDITION AND FREIGHT MUST BE PREPAID. A SEMI-ANNUAL INVENTORY ADJUSTMENT WILL BE ALLOWED WITH AN OFFSETTING ORDER OF EQUAL OR GREATER VALUE. CREDIT BALANCES CAN BE OFFSET BY PURCHASES ONLY.

CHANGES:

PRICES AND SPECIFICATIONS ARE SUBJECT TO CHANGE WITHOUT PRIOR NOTICE.

ORDER ENTRY EMAIL:

Email: sales@roadrunnerperformance.com or Fax: 509.262.9500

All orders and pricing confirmed on same day; if received by 3pm.

MAILING ADDRESS:

Roadrunner Performance
P.O. Box 1679, SIMI VALLEY, CA 93062
PACKAGES: 665 EAST LOS ANGELES AVENUE, UNIT A,
SIMI VALLEY, CA 93065

FAX (509) 262-9500 • PHONE (509) 262-9165

sales@roadrunnerperformance.com

www.roadrunnerperformance.com

